

C. & S. RY DENVER 7-26-18 4802

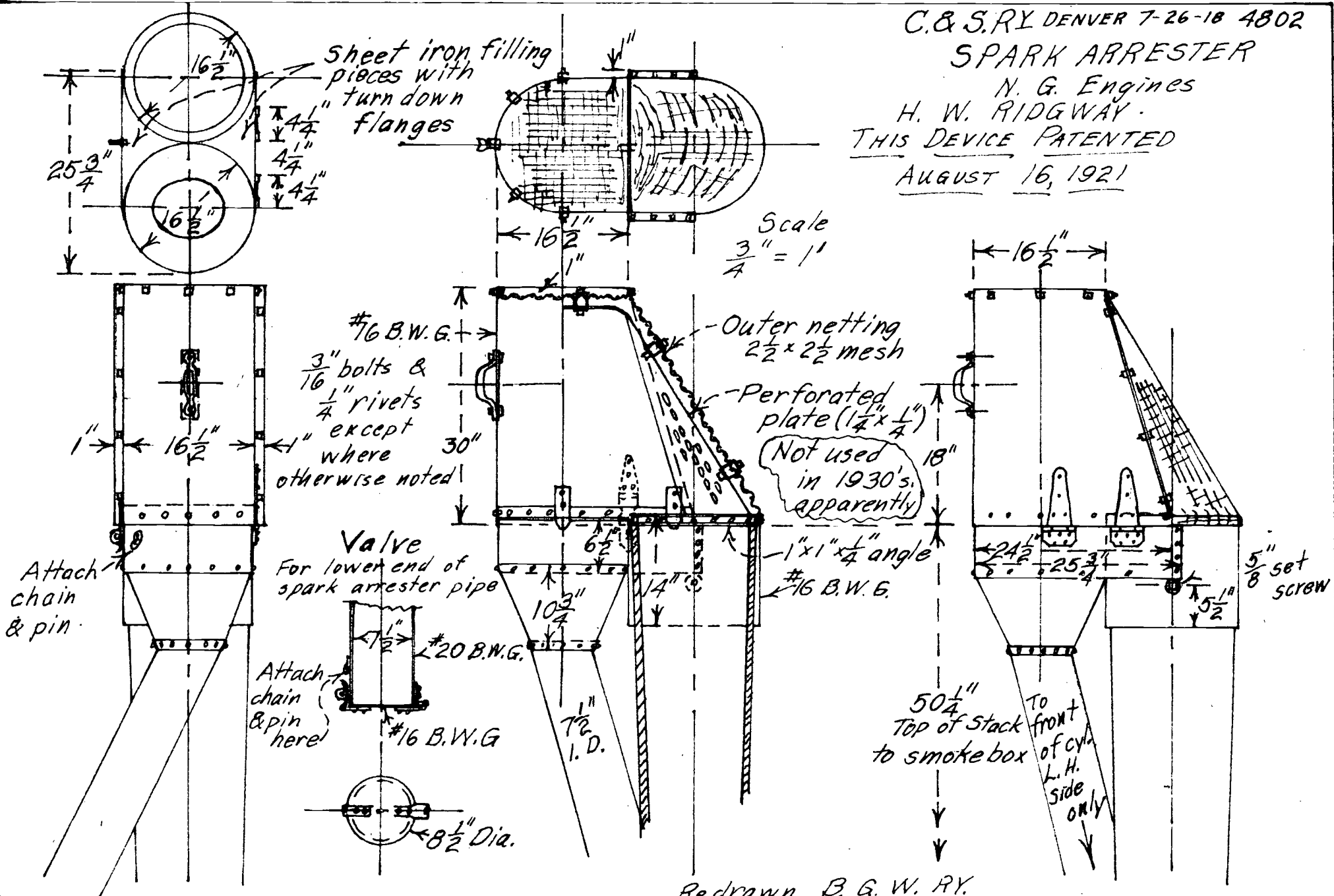
SPARK ARRESTER

N. G. Engines

H. W. RIDGWAY.

THIS DEVICE PATENTED

AUGUST 16, 1921



Scale
 $\frac{3}{4}'' = 1''$

Not used
in 1930's,
apparently

$50\frac{1}{4}''$
Top of stack
to smoke box

To front
of cyl.
L.H.
side
only

Original dwg. courtesy Geo. Lundberg

Redrawn B. G. W. RY.
BALSAM SHOPS
Wheat Ridge, Colo. Aug 10, 1954

No C-11