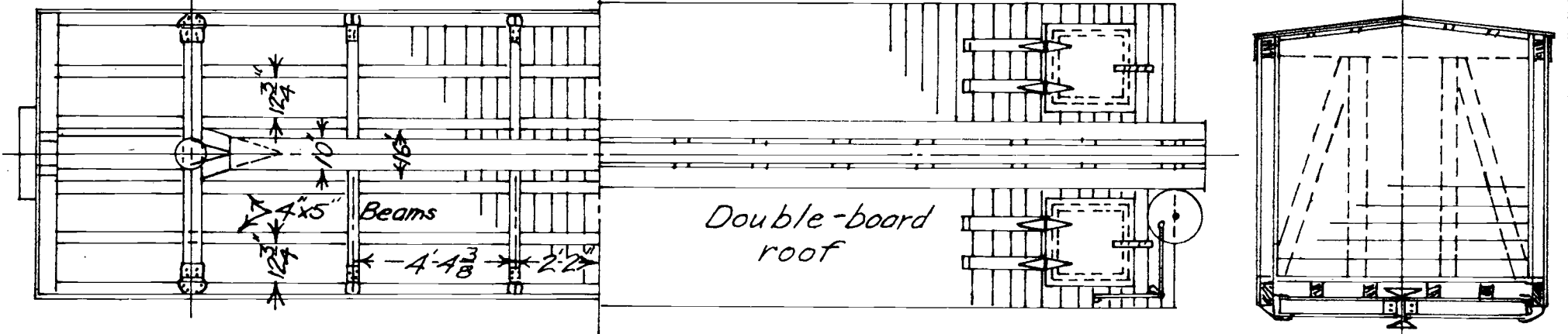


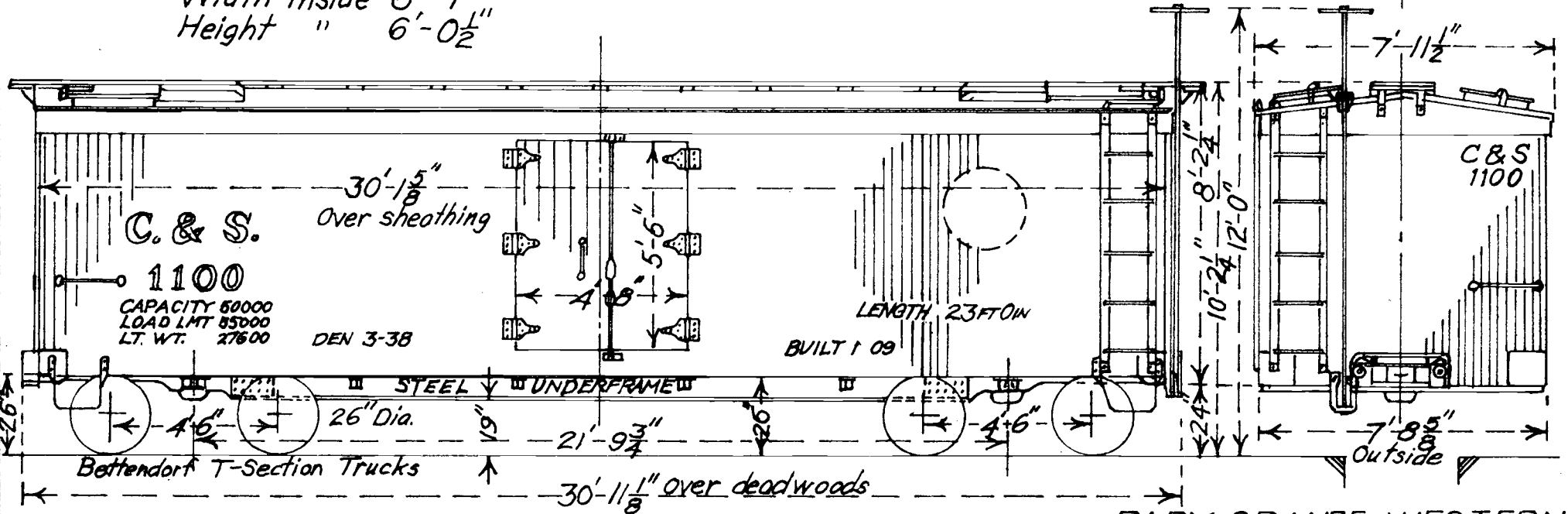
C&S 1113, 1116 & 1108 became
RGS 2101-3 in 1938

COLORADO AND SOUTHERN R.R.
REFRIGERATOR CAR 3 FT. Ga.
Nos. 1100-1119

Scale $\frac{1}{4}'' = 1'$



Width inside 6'-7"
Height " 6'-0 1/2"



Series 1100-1119
Builder C & S
Jan. & Feb. 1909

Sides - Refrg Yellow; Roof, ends, underframe Frt Car Red
Lettering on sides - Black; on ends - White
Herald: Black with White letters.

BABY GRANDE WESTERN
BALSAM SHOPS
DRAWN: J.W.M. No C-2
Wheat Ridge, Colo. 3-19-47

Rev'd 10/61
Rev'd 9/54
Rev'd 11/48