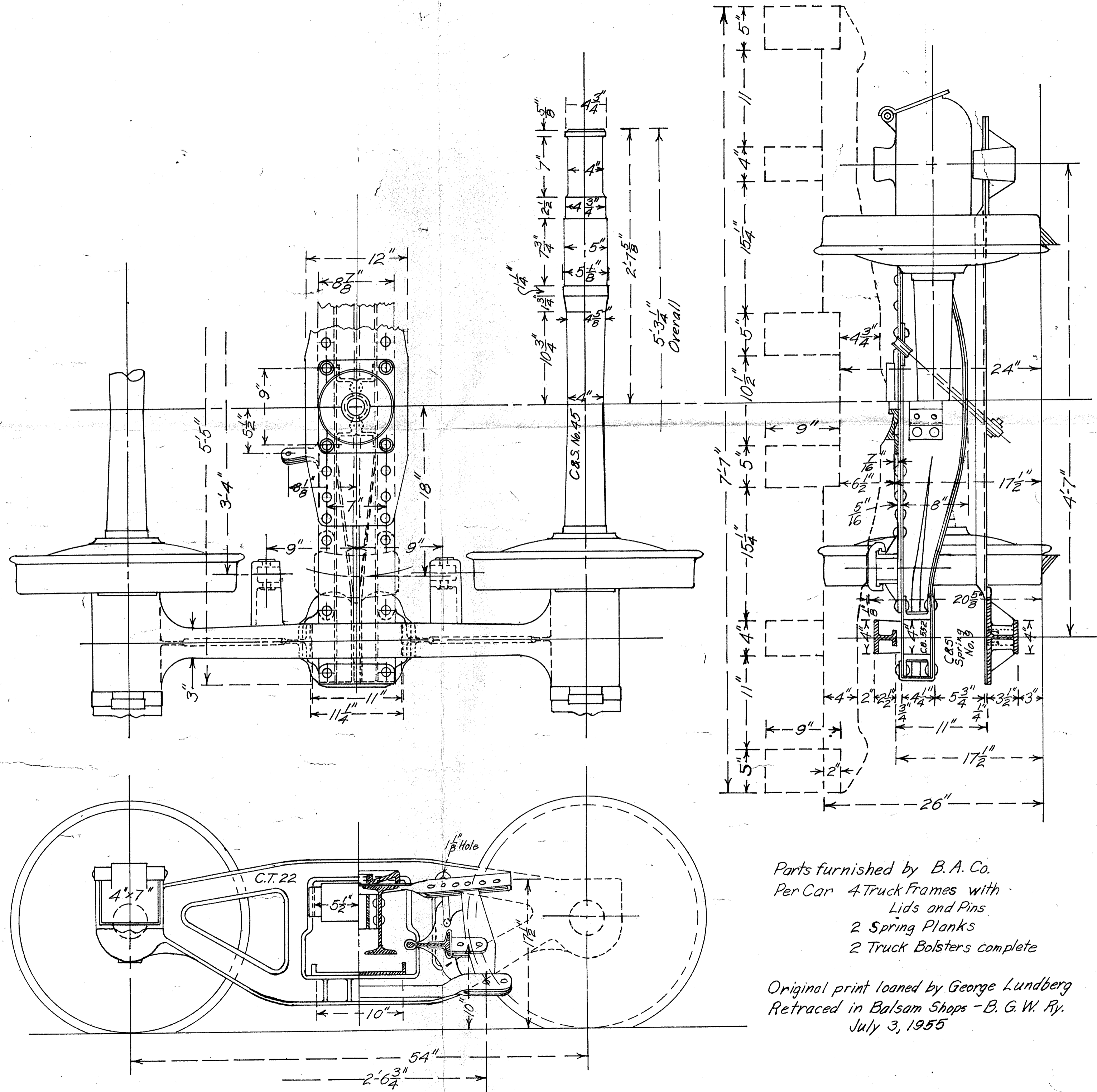


Used on  
 N.G. Box Cars  
 8143-8192 incl.  
 built D.S. 9.08  
 N.G. Gondola  
 4448-4497 incl.  
 built D.S. 9.08  
 N.G. Refr. Cars  
 500-519  
 built D.S. 1.09



Parts furnished by B.A. Co.  
 Per Car 4 Truck Frames with  
 Lids and Pins.  
 2 Spring Planks  
 2 Truck Bolsters complete

Original print loaned by George Lundberg  
 Retraced in Balsam Shops - B. G. W. Ry.  
 July 3, 1955

C-201  
 Bettendorf Truck N.G.  
 Class F2